

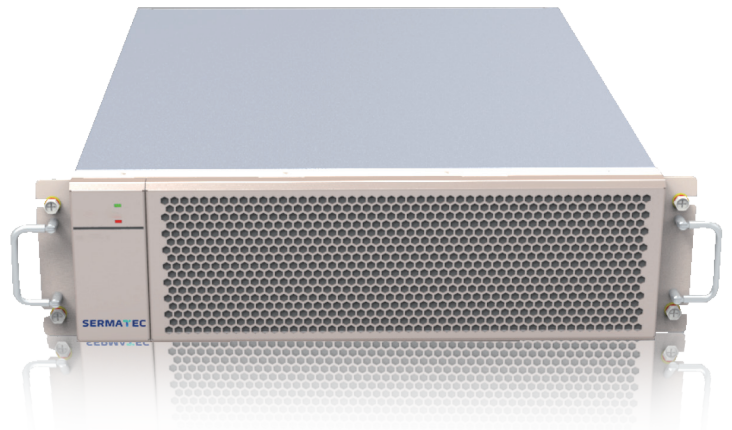
As an industry-leading energy digital intelligence operator and energy storage system solution provider, Ser-matec is committed to ensuring the safe and efficient operation of energy digital intelligence and energy storage system through advanced energy interconnection technology and power electronics technology.

- Core Team - Years of Experience: **15+**
- Proprietary Intellectual Property Rights: **100+**
- Countries and Regions of Customers: **30+**
- Proportion of R&D Personnel: **70%**

Commercial & Industrial Modular PCS

SMT-30DC/AD/MT SMT-60DC/AD/MT

This module features full digital control. It has excellent load and power grid adaptability, suitable for many complex application scenarios. The system operation is highly safe, reliable, economical and environmentally adaptable.



Product Features

- Modular design and flexible multi-unit parallel connection based on an advanced control algorithm
- Smart control of mode switching - switching time under full power ≤ 30 ms
- Supporting 3P4W+PE, convenient for use and maintenance
- Inverter on-grid and off-grid modes, suitable for large-scale C&I projects



Data Center



Commercial Buildings



Industrial Parks



Pv, Storage & Charging
Integration



Distribution Grid Expansion

Technical Data

Product Type	SMT-30DC/AD/MT	SMT-60DC/AD/MT
DC Input		
Max. Voltage (V)	1000	1000
Rated Voltage (V)	800	800
Voltage Range (V)	680 ~ 1000	680 ~ 1000
Max. Charging / Discharging Current (A)	44	88
Ac Side (On-grid) Parameters		
Max. Input Apparent Power (kVA)	30	60
Max. Input Active Power (kW)	30	60
Rated Input Voltage (V)	230/400, 3P4W+PE	230/400, 3P+N+PE
Max. Continuous Input Current (A)	43	86
Power Factor	0.8 leading... 0.8 lagging	0.8 leading... 0.8 lagging
Ac Side (Off-grid) Parameters		
Rated Output Voltage (V)	230/400, 3P+N+PE	230/400, 3P+N+PE
Rated Output Frequency (Hz)	50	50
Max. Continuous Output Current (A)	43	86
Max. Output Active Power (kW)	30	60
Max. Output Apparent Power (kVA)	30	60
Load Unbalance Capacity (%)	100	100
Overload Capacity	1.1 times 1min @ 35 °C ; 1.2 times 5s	1.1 times 1min @ 35 °C ; 1.2 times 5s
General Data		
Operating Temperature Range (°C)	-30 ~ 60 (> 45 derating)	-30 ~ 60 (> 45 derating)
Degree Of Protection	IP20	IP20
Max. Operating Altitude (m)	3000	3000
Max. Efficiency (%)	98.5	98.5
AC / DC Start Function	Integrated	Integrated
Dimension (W*D*H)mm	436*550*130	436*550*130
Weight (kg)	25	28
Communication		
Battery BMS Communication Interface	CAN, RS485	CAN, RS485
Superior Monitoring Communication Interface	Ethernet, RS485	Ethernet, RS485
Supervisory Monitoring Communication Protocol	Modbus TCP/Modbus RTU	Modbus TCP/Modbus RTU
General IO Port	3 - DI, 2 - DO	3 - DI, 2 - DO

Disclaimer: The content of the Manual is for reference only. In case of any change, please refer to the actual product.

